

## Sheerweave 4510



### Description:

SW4510 is a 2x2 basketweave. Suitable for internal & external use.

### Key Features:

Width: 3200mm  
Suitable for : Roller, Roman & Panel Blinds  
Colours: 6  
Quality: Screen

### Specification: (1ECO4510)

- Composition: 25% Polyester, 75% Vinyl on Polyester (over 50% of compound components are derived from crop based feed stocks and minerals. Over 2/3 of total compound is derived from non fossil fuel based feed stocks)
- Openness Factor: 10%
- UV Blockage: 90% approx.
- Weave: Basketweave
- **Fire Classification:** California US Title 19 (small scale), NFPA 701 – 2004 TM#1 (small scale). BS 5867 2008 Part 2 Type B Performance.
- Thickness: 0.69mm
- Weight: 436 g/m<sup>2</sup>
- Cutting: Ultrasonic, Crush Cut

**Solar Optical Properties:** Fabrics installed internally thirty-degree profile angle

Colour	Solar Optical Properties				Shading Coefficient	
	Ts	Rs	As	Tv	3mm CL	6mm CL
White	20	69	11	23	0.32	0.32
White Linen	19	62	19	23	0.37	0.37
White Grey	15	50	35	20	0.44	0.44
White Stone	17	58	25	22	0.39	0.39
Charcoal	13	3	84	19	0.76	0.72
Charcoal Grey	12	11	77	17	0.71	0.67

Ts: Solar Transmittance  
Rs: Solar Reflectance  
As: Solar Absorptance  
Tv: Visual Transmittance  
3mm CL: 3mm Clear Glass  
6mm CL: 6mm Clear Glass

**Care:** Fabric should be regularly dusted / vacuumed as appropriate. May be wiped with warm water and mild detergent.

**Warranty:** 10 year interior | 5 year exterior



### Colour Range \*



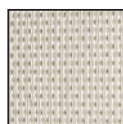
SW4510



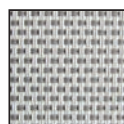
white



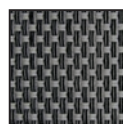
white linen



white stone



white grey



charcoal grey



charcoal

\*colours representative only