

Sheerweave 4500



Description:

2x2 basketweave. Available in two widths. Suitable for internal & external use.

Key Features:

Width: 2500mm | 3200mm
Suitable for: Roller, Roman & Panel Blinds
Colours: 10
Quality: Screen

Specification: (1ECO4500)

- Composition: 25% Polyester, 75% Vinyl on Polyester (over 50% of compound components are derived from crop based feed stocks and minerals. Over 2/3 of total compound is derived from non fossil fuel based feed stocks)
- Openness Factor: 5%
- UV Blockage: 95% approx.
- Weave: Basketweave
- Fire Classification:
- Thickness: 0.61mm
- Weight: 488 g/m²
- Cutting: Ultrasonic, Crush Cut

Solar Optical Properties: Fabrics installed internally thirty-degree profile angle

Colour	Solar Optical Properties				Shading Coefficient	
	Ts	Rs	As	Tv	3mm CL	6mm CL
White	12	74	14	11	0.26	0.27
White Linen	13	62	25	13	0.35	0.35
White Grey	10	49	41	11	0.44	0.43
White Stone	12	61	27	12	0.36	0.36
Sandstone	Please refer to website for details					
Linen	10	47	43	11	0.45	0.44
Charcoal Gold	Please refer to website for details					
Charcoal	5	3	92	7	0.74	0.70
Charcoal Grey	7	10	83	10	0.70	0.67
Charcoal Bronze	7	5	88	9	0.73	0.70

Ts: Solar Transmittance
Rs: Solar Reflectance
As: Solar Absorptance
Tv: Visual Transmittance
3mm CL: 3mm Clear Glass
6mm CL: 6mm Clear Glass

Care: Fabric should be regularly dusted / vacuumed as appropriate. May be wiped with warm water and mild detergent.

Warranty: 10 year interior | 5 year exterior



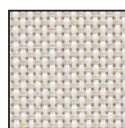
Colour Range *



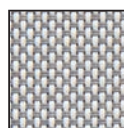
SW4500



white



white linen



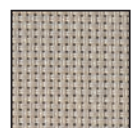
white grey



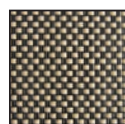
white stone



sandstone (new)



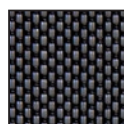
linen



charcoal gold
(new)



charcoal



charcoal grey



charcoal bronze

*colours representative only