

Sheerweave 4300



Description:

SW4300 is a half basketweave screen with 3% openness, available in a colour range suitable for domestic and commercial application.

Key Features:

Width: 3200mm

Suitable for : Roller, Roman & Panel Blinds, Internal & External use

Colours: 6

Quality: Screen

Specification: (1ECO4300)

- Composition: 25% Polyester, 75% Vinyl on Polyester (over 50% of compound components are derived from crop based feed stocks and minerals. Over 2/3 of total compound is derived from non fossil fuel based feed stocks)
- Openness Factor: 3%
- UV Blockage: 97% approx.
- Weave: ½ Basketweave
- Thickness: 0.73mm
- Weight: 510 g/m²
- Cutting: Ultrasonic, Crush Cut

Solar Optical Properties: Fabrics installed internally zero-degree profile angle

Colour	Solar Optical Properties				Shading Coefficient	
	Ts	Rs	As	Tv	3mm CL	6mm CL
White	8	74	18	7	0.24	0.26
White Stone	5	64	31	6	0.32	0.32
Charcoal	5	3	92	8	0.74	0.70
Sandstone	Please refer to website for details					
Slate Stone	5	10	85	8	0.70	0.66
Charcoal Gold	7	15	78	10	0.67	0.64

Ts: Solar Transmittance

Rs: Solar Reflectance

As: Solar Absorptance

Tv: Visual Transmittance

3mm CL: 3mm Clear Glass

6mm CL: 6mm Clear Glass

Care: Fabric should be regularly dusted / vacuumed as appropriate. May be wiped with warm water and mild detergent.

Warranty: 10 year interior | 5 year exterior



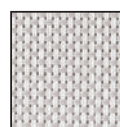
Colour Range *



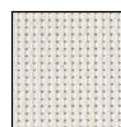
SW4300



white



white stone



sandstone



charcoal gold



slate stone



charcoal

*colours representative only